

GREAT OCT PERFORMANCE.  
EVEN BETTER PRICE.



**It's OCT. Re-imagined.** Because of its patented, low-cost architecture, the OQ LabScope enables researchers, innovators and educators to take advantage of OCT's powerful imaging capability.

**It's affordable.** The OQ LabScope's price is a fraction of any other OCT system. Now, finally, many laboratories will be able to afford this technology.

**It's accurate.** The OQ LabScope generates 512 X 512 pixel images, matching the performance of OCT units costing three times as much.

**It's compact.** The OQ LabScope is about the size of a shoe box, won't crowd your bench - or require a special cart.

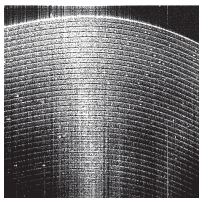
**It's easy to use.** Focus on science, not on setup. The software is simple, so you can generate images quickly.

**It's customizable.** The OQ LabScope can be configured for specific applications upon request.

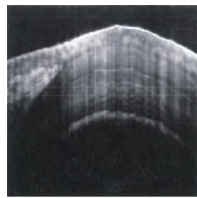
## LABORATORY-GRADE PERFORMANCE

Image Size	512px x 512px
Depth Resolution	7 $\mu$ m in air, 5 $\mu$ m in tissue
Transverse Resolution	15 $\mu$ m
Scan Range	7 mm x 7 mm
A-Scan Line Rate	8,800/second
B-Scan Image Rate	12/second
Center Wavelength	840 nm
Sensitivity (OSNR)	100 dB
Output Power	750 $\mu$ W
System Size	13w x 7.5d x 6h inches
Scanner Size	4.5w x 2.5d x 1.9h inches
System Weight	6 lbs.

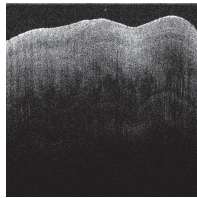
## SAMPLE OCT IMAGES



1. Layers of Scotch Tape



2. Finger Nail & Cuticle



3. Layers of a Tooth



**Systems  
Engineering**

株式会社 システムズエンジニアリング

<http://www.systems-eng.co.jp>  
[info@systems-eng.co.jp](mailto:info@systems-eng.co.jp)

【 本 社 】 TEL 03-3946-4993 FAX 03-3946-4983 〒113-0021 東京都文京区本駒込 2-29-24 パシフィックスクエア千石 9F  
【技術センター】 TEL 03-6279-8908 FAX 03-6279-8907 〒174-0041 東京都板橋区舟渡 3-5-8 MIC-1 303  
【西日本営業所】 TEL 06-6868-9790 FAX 06-6868-9796 〒532-0003 大阪府大阪市淀川区宮原 2-14-4 MF 新大阪ビル 3F